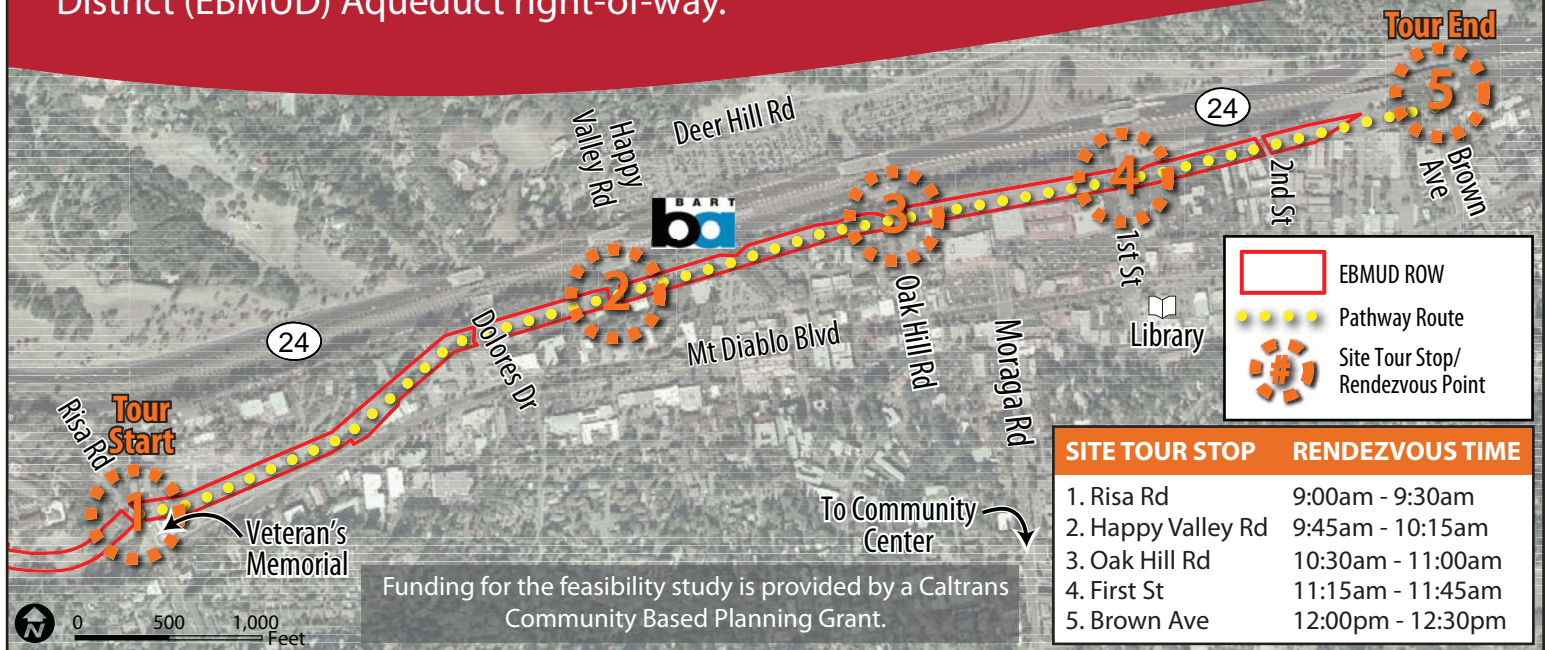


The City of Lafayette invites interested community members to participate in a **site tour and a public workshop** for the City's Feasibility and Options Study of a Bicycle and Pedestrian Pathway along the East Bay Municipal Utility District (EBMUD) Aqueduct right-of-way.



The pathway under study would follow the EBMUD Aqueduct through Downtown Lafayette from Risa Road to Brown Avenue, south of State Route 24 and north of Mount Diablo Boulevard. The Feasibility and Options Study will determine whether the City should pursue a pathway along all or part of this corridor. If constructed, the pathway would provide connections for bicyclists and pedestrians to BART, businesses and residences in Downtown Lafayette, and to trails in Briones Regional Park.

### SITE TOUR

Saturday, May 7th from 9:00 a.m. to 12:30 p.m. along the EBMUD Aqueduct right-of-way

Join us to learn what the draft preferred pathway design will look like in the field. See photo-simulations, ask questions and provide your input and ideas. The guided tour consists of five stops (see above), beginning at Risa Road north of Mt. Diablo Boulevard and finishing at Brown Avenue.

### PUBLIC WORKSHOP

Thursday, May 12th from 7 p.m. until 9 p.m. in the Manzanita Room at the Community Center, 500 St. Mary's Road, Lafayette

- » Learn the why, the what, the where, and the how much of the proposed pathway.
- » View maps and photo-simulations of the draft preferred design options.
- » Learn about next steps, and tell us what you think.

Visit the study's website [www.lafayettepathway.com](http://www.lafayettepathway.com) to learn more about the study and these upcoming events, to submit comments, or to sign up for future emails.

