

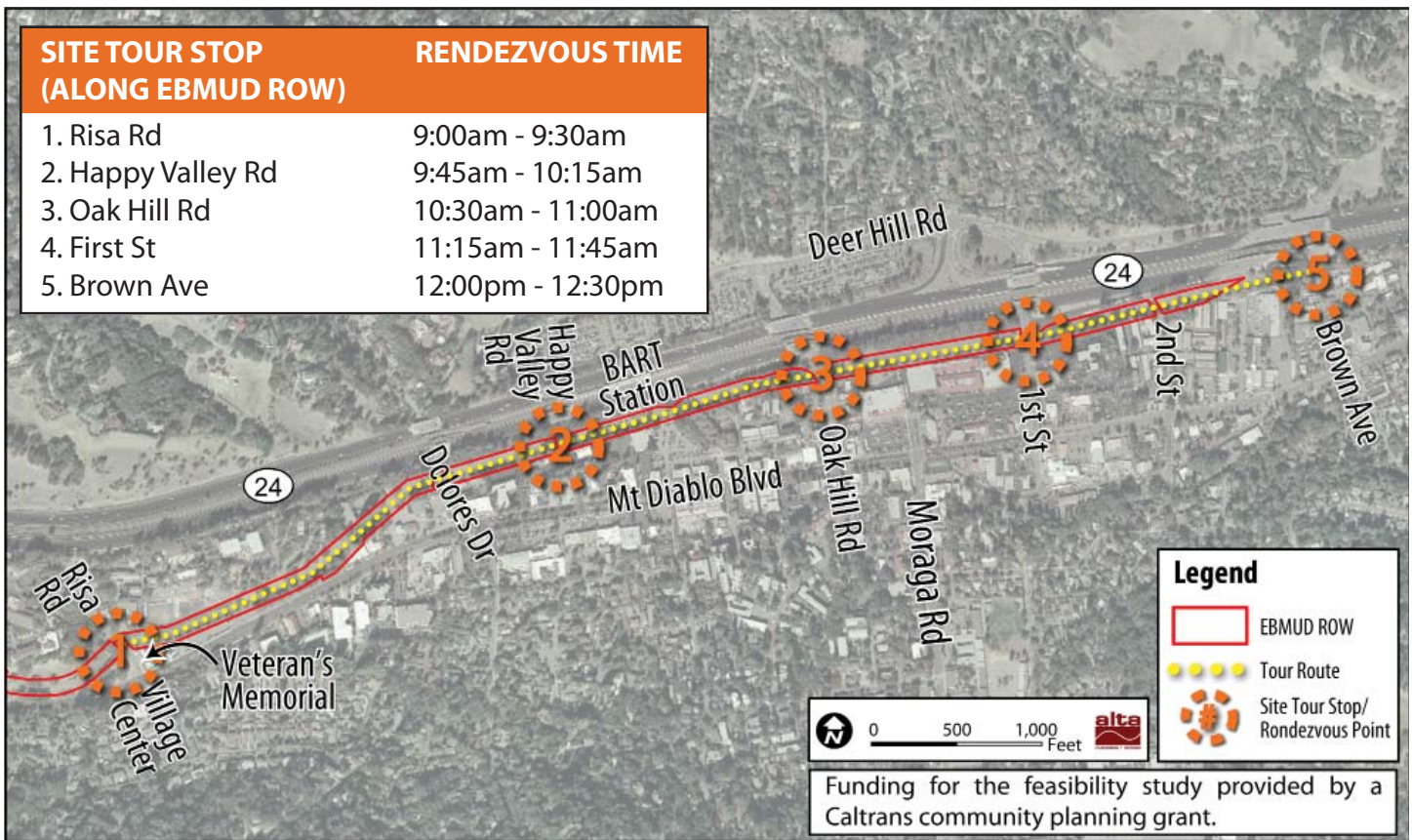


# Please Join the City of Lafayette on a Public Site Tour for the EBMUD Aqueduct Bicycle & Pedestrian Pathway Feasibility Study

On Saturday October 2, 2010  
From 9:00am - 12:30pm, Rain or Shine

This field tour is intended to promote information sharing and dialogue between interested stakeholders, potential path users, the general public and the City.

The tour consists of five site tour stops (please see below), beginning at Risa Road north of Mt. Diablo Boulevard and finishing at Brown Avenue. City staff and consultants will facilitate discussion at each of the rendezvous points and solicit community input and ideas about key pathway design, management and maintenance topics.



The City will provide transportation between site tour stops, returning to Site Tour Stop 1 at the conclusion of the tour.



It is possible to walk, bike and drive to each of the site tour stop locations. We recommended walking or bicycling so long as you are comfortable and able to traverse the project study area or adjoining streets using these modes of transportation.



The total length of the project site is approximately 1.5 miles. There are some steep sections and uneven walking surfaces.

**Additional information available at: [www.lafayettepathway.com](http://www.lafayettepathway.com)**